



Aqua Premier Additional Installation Procedures

These fittings were not installed at the factory to prevent damage during shipping and will need to be installed prior to making tube connections.

There are two fittings that need to be installed and tubing connections needed to complete the Reverse Osmosis assembly.

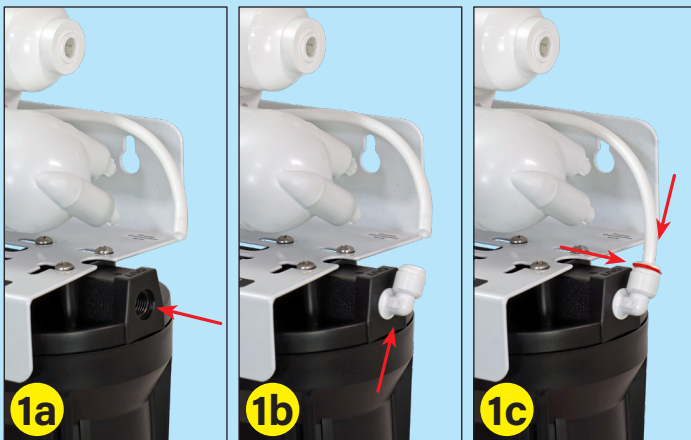
Step 1 - Locate the fittings to the right.

1/4" Locking Clip

1/4" Thread x 1/4" Tube Male Elbow



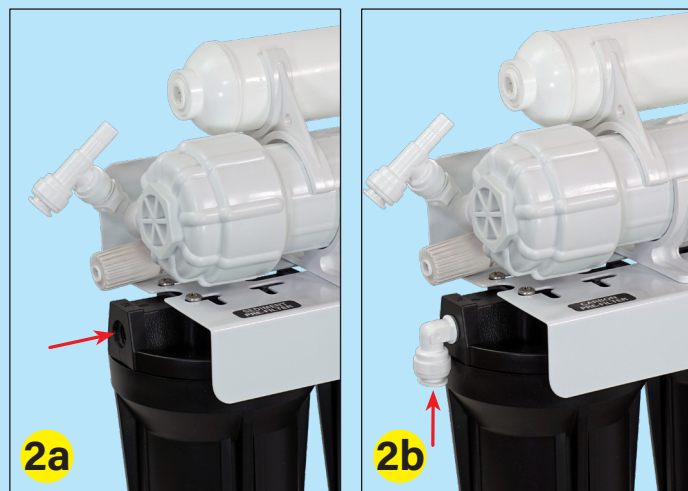
Locate the (Out) opening on the filter housing on the right side of the appliance as shown below, Step 1a. Thread in the Male Elbow being careful not to cross-thread the fitting, Step 1b. Insert and fully seat the 1/4" white tubing into the fitting and install the locking clip, Step 1c.



Step 2 - Locate the fitting to the right.

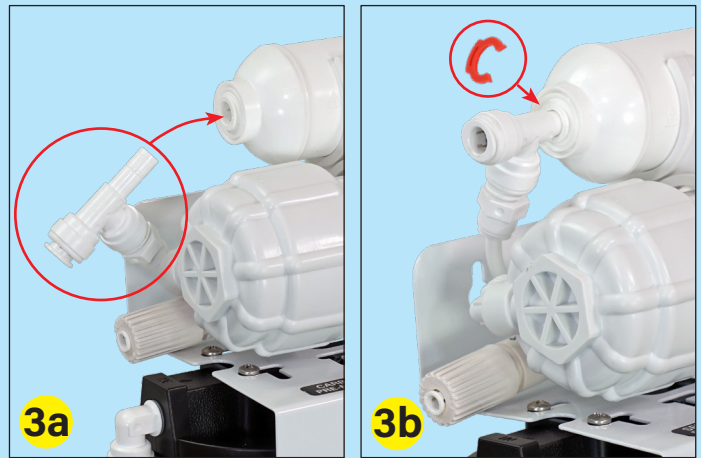
1/4" Thread x 3/8" Tube Male Elbow

Locate the (IN) opening on the filter housing on the left side of the appliance as shown below, Step 2a. Thread in the Male Elbow being careful not to cross-thread the fitting, Step 2b.



Step 3 - Locate the fittings circled in photos 3a below.

Insert and fully seat the 3/8" stem into the outlet of the in-line carbon filter and install a 3/8" Locking Clip, Step 3b.



Step 4 - Locate the fitting shown below.

1/4" Thread x 3/8" Tube Ball Valve

Install the ball valve on the storage tank as shown to the right.



Step 5 - Tubing Connections

Refer to Figure 1a in the Installation Manual for full illustration of system tubing and complete installation instructions.

