

TWIN ALTERNATING SOFTENER

MODEL NO. NCSMF-WS2H-TA-450-C3948

CAPACITY: (each tank)

MIN. 360,000 grs. @ 10 lbs./cu.ft.

MAX. 450,000 grs. @ 15 lbs./cu.ft.

FLOW RATE: (each tank)

NORMAL 88 gpm.

PEAK 113 gpm.

BACKWASH 25 gpm.

TANK SIZE: 30" x 72"

COMPOSITE

MEDIA: (each tank)

RESIN 15 cu.ft.

GRAVEL 350 lbs.

PIPE SIZE:

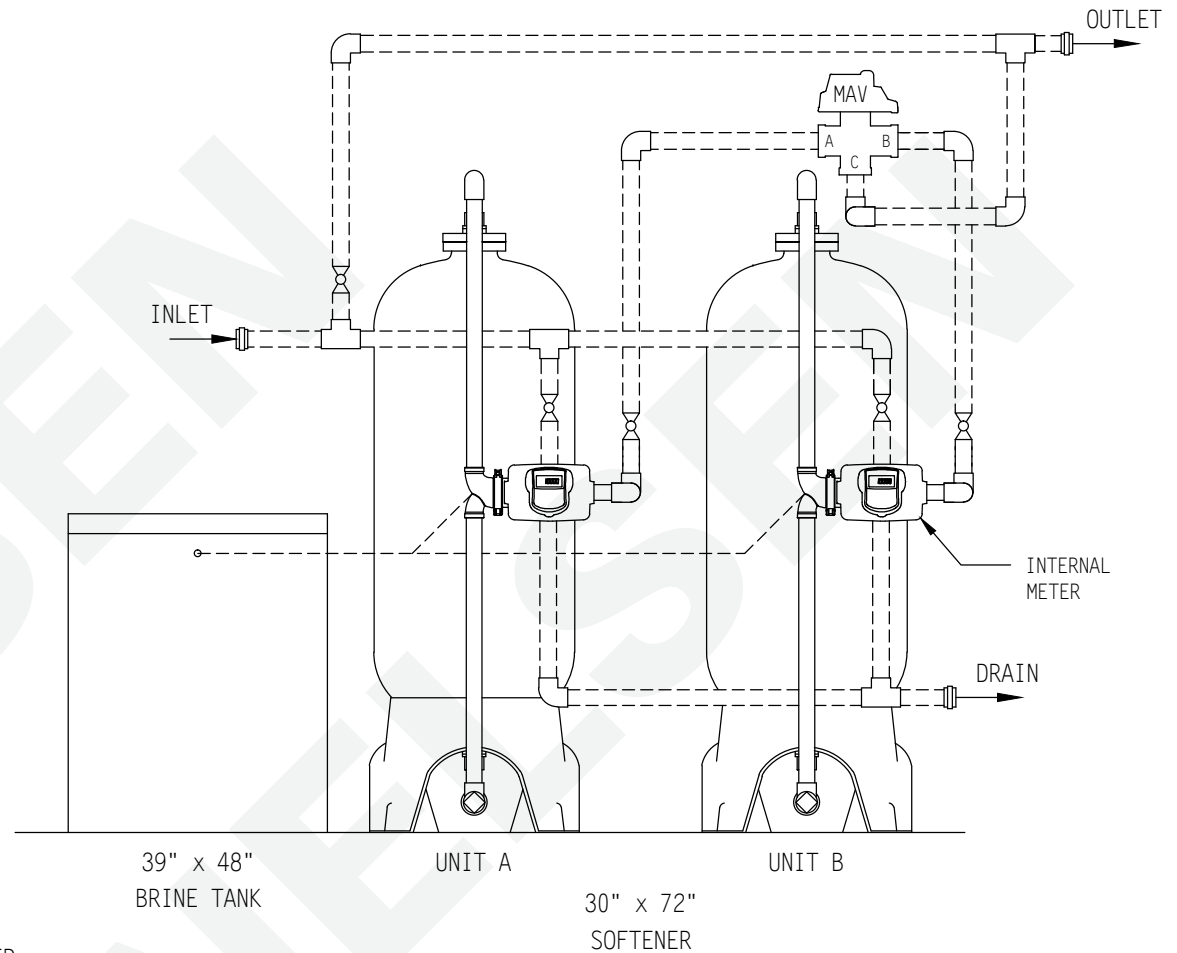
INLET 2"

OUTLET 2"

DRAIN 1"

BRINE 1/2"

METER 2"



BRINE TANK

MODEL NO. BT3948R-454HF-5

TANK SIZE: 39" x 48"

POLYETHYLENE

CAPACITY:

250 gals.

2,200 lbs./salt

BRINE VALVE: 454HF

BRINE WELL: 5"

WEIGHT (APPROX)

TOTAL SHIPPING 2,950 lbs.

NOTE:

ALL DASHED PIPE, VALVES, AND FITTINGS NOT PROVIDED BY NELSEN CORPORATION.

SPACE REQUIRED (APPROX)

107"L x 39"W x 96"H

PEAK FLOWS ARE NOT RECOMMENDED FOR EXTENDED PERIODS OF TIME.

DO NOT SCALE DRAWING

THIS DRAWING IS ISSUED IN CONFIDENCE AND CANNOT BE REPRODUCED OR USED TO MANUFACTURE ANYTHING SHOWN OR REFERRED TO WITHOUT DIRECT WRITTEN PERMISSION FROM NELSEN CORPORATION.

NELSEN
CORPORATION

NELSEN CORPORATION
OHIO • ARIZONA • TEXAS • FLORIDA
3250 BARBER RD - NORTON, OH 44203
800-362-9686
NELSENCORP.COM/COMMERCIAL

GENERAL ARRANGEMENT DWG.
SOFTENER 450K COMPOSITE TANK
TWIN ALTERNATING

DRAWN BY:	RAR
DATE:	04-04-17
CHECKED BY:	
PAGE 1 OF 1	REV:

DWG. NO.
NCSMF-WS2H-TA-450-C3948