

TWIN ALTERNATING SOFTENER

MODEL NO. NCSMF-WS2H-TA-600-C5060

CAPACITY: (each tank)

MIN. 480,000 grs. @ 10 lbs./cu.ft.

MAX. 600,000 grs. @ 15 lbs./cu.ft.

FLOW RATE: (each tank)

NORMAL 97 gpm.

PEAK 126 gpm.

BACKWASH 35 gpm.

TANK SIZE: 36" x 72"

COMPOSITE

MEDIA: (each tank)

RESIN 20 cu.ft.

GRAVEL 500 lbs.

PIPE SIZE:

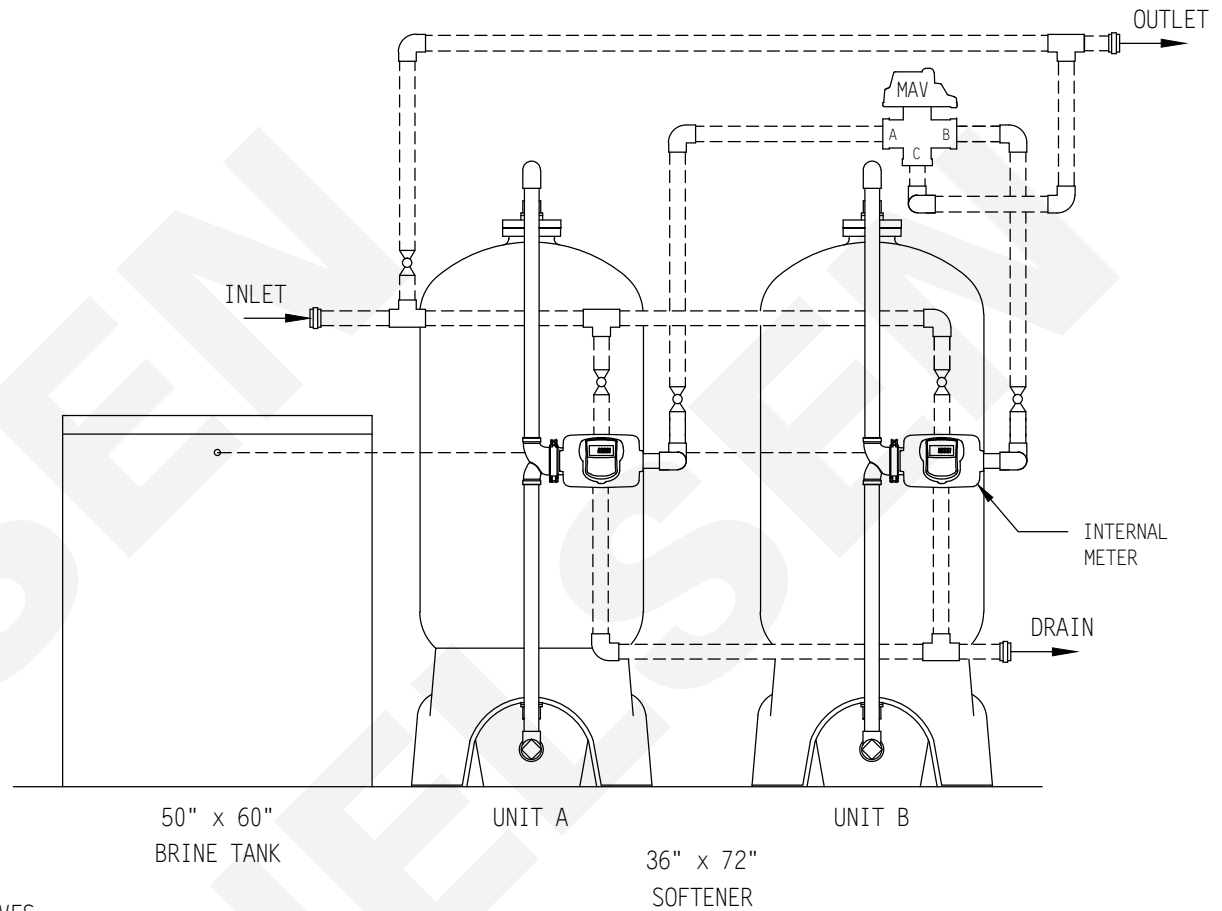
INLET 2"

OUTLET 2"

DRAIN 1"

BRINE 1/2"

METER 2"



BRINE TANK

MODEL NO. BT5060R-454HF-5

TANK SIZE: 50" x 60"

POLYETHYLENE

CAPACITY:

500 gals.

4,500 lbs./salt

BRINE VALVE: 454HF

BRINE WELL: 5"

WEIGHT (APPROX)

TOTAL SHIPPING 3,865 lbs.

NOTE:

ALL DASHED PIPE, VALVES, AND FITTINGS NOT PROVIDED BY NELSEN CORPORATION.


SPACE REQUIRED (APPROX)

130"L x 50"W x 98"H

PEAK FLOWS ARE NOT RECOMMENDED FOR EXTENDED PERIODS OF TIME.

DO NOT SCALE DRAWING

THIS DRAWING IS ISSUED IN CONFIDENCE AND CANNOT BE REPRODUCED OR USED TO MANUFACTURE ANYTHING SHOWN OR REFERRED TO WITHOUT DIRECT WRITTEN PERMISSION FROM NELSEN CORPORATION.

		NELSEN CORPORATION OHIO • ARIZONA • TEXAS • FLORIDA 3250 BARBER RD - NORTON, OH 44203 800-362-9686 NELSENCORP.COM/COMMERCIAL	
		GENERAL ARRANGEMENT DWG. SOFTENER 600K COMPOSITE TANK TWIN ALTERNATING	
DRAWN BY: RAR DATE: 04-04-17 CHECKED BY: PAGE 1 OF 1	REV:	DWG. NO. NCSMF-WS2H-TA-600-C5060	