

# DUPLEX METER SOFTENER

MODEL NO. NCSMF-WS2HF-DUP-600-C5060

CAPACITY: (each tank)

MIN. 480,000 grs. @ 10 lbs./cu.ft.

MAX. 600,000 grs. @ 15 lbs./cu.ft.

FLOW RATE: (each tank)

NORMAL 97 gpm.

PEAK 126 gpm.

BACKWASH 35 gpm.

TANK SIZE: 36" x 72"

COMPOSITE

MEDIA: (each tank)

RESIN 20 cu.ft.

GRAVEL 500 lbs.

PIPE SIZE:

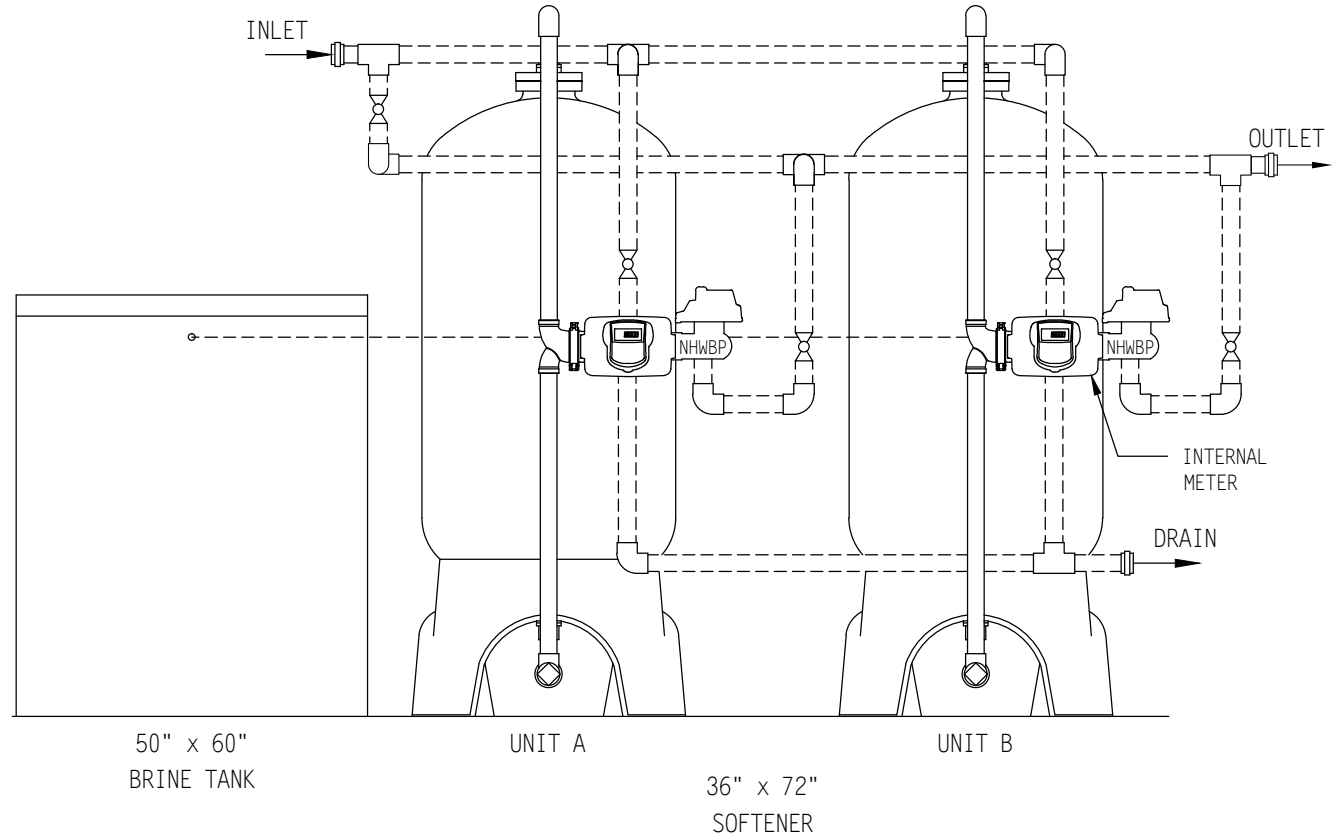
INLET 2"

OUTLET 2"

DRAIN 1"

BRINE 1/2"

METER 2"



## BRINE TANK

MODEL NO. BT5060R-454HF-5

TANK SIZE: 50" x 60"

POLYETHYLENE

CAPACITY:

500 gals.

4,500 lbs./salt

BRINE VALVE: 454HF

BRINE WELL: 5"

WEIGHT (APPROX)

TOTAL SHIPPING 3,865 lbs.

## NOTE:

ALL DASHED PIPE, VALVES,  
AND FITTINGS NOT PROVIDED  
BY NELSEN CORPORATION.

SPACE REQUIRED (APPROX)

130"L x 50"W x 98"H

PEAK FLOWS ARE NOT  
RECOMMENDED FOR EXTENDED  
PERIODS OF TIME.

### DO NOT SCALE DRAWING

THIS DRAWING IS ISSUED IN CONFIDENCE AND  
CANNOT BE REPRODUCED OR USED TO  
MANUFACTURE ANYTHING SHOWN OR REFERRED  
TO WITHOUT DIRECT WRITTEN PERMISSION FROM  
NELSEN CORPORATION.

**NELSEN**  
CORPORATION

**NELSEN CORPORATION**  
OHIO • ARIZONA • TEXAS • FLORIDA  
3250 BARBER RD - NORTON, OH 44203  
800-362-9686  
NELSENCORP.COM/COMMERCIAL

GENERAL ARRANGEMENT DWG.  
SOFTENER 600K COMPOSITE TANK  
DUPLEX METER SYSTEM

DRAWN BY:	RAR
DATE:	04-05-17
CHECKED BY:	
PAGE 1 OF 1	REV:

DWG. NO.  
NCSMF-WS2HF-DUP-600-C5060