

DUPLEX NXT2 SOFTENER

MODEL NO. NCSMF-29/17NXT2-DUP-300-C3048

CAPACITY:

MIN. 240,000 grs. @ 10 lbs./cu.ft. (each tank)
 MAX. 300,000 grs. @ 15 lbs./cu.ft. (each tank)

FLOW RATE:

NORMAL 60 gpm. (each tank)
 PEAK 95 gpm. (each tank)
 BACKWASH 15 gpm. (each tank)

TANK SIZE: 24" x 72"

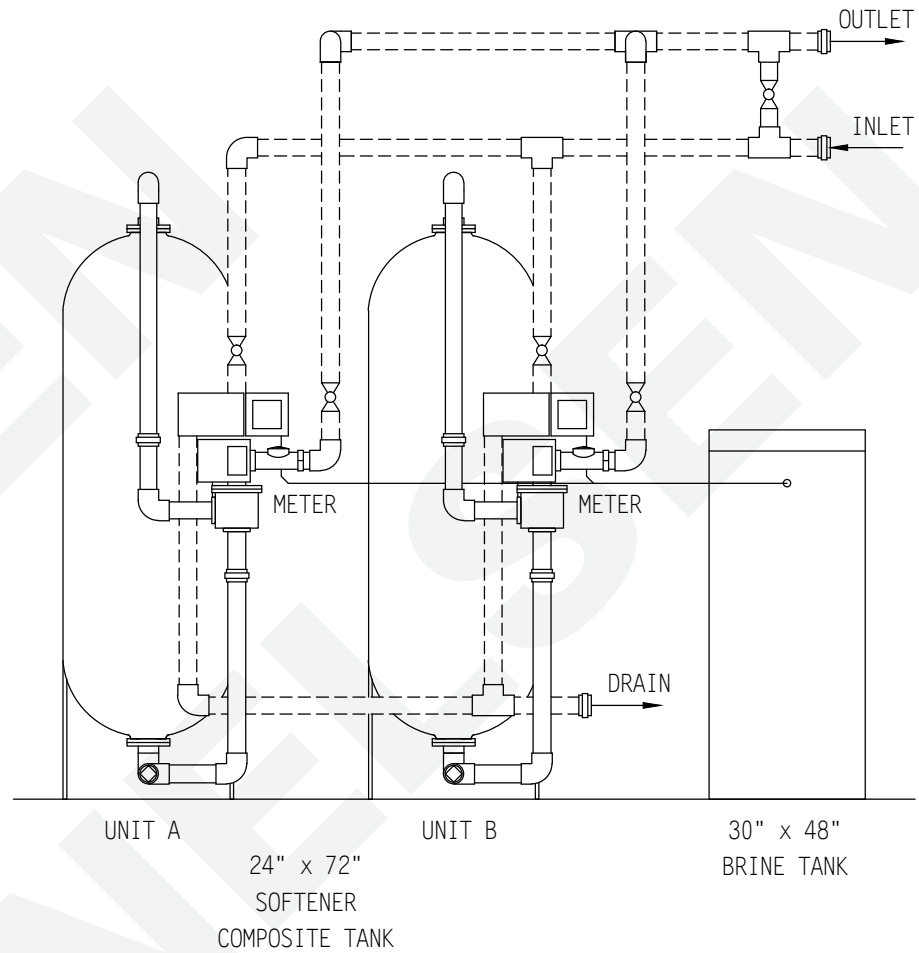
100 PSI COMPOSITE

MEDIA:

RESIN 10 cu.ft. (each tank)
 GRAVEL 250 lbs. (each tank)

PIPE SIZE: PVC

INLET 2"
 OUTLET 2"
 DRAIN 1"
 BRINE 1/2"
 METER 2"



BRINE TANK

MODEL NO. BT3048R-454HF-5

TANK SIZE: 30" x 48"

POLYETHYLENE

CAPACITY:

145 gals.
 1,200 lbs./salt

BRINE VALVE: 454HF

BRINE WELL: 5"

WEIGHT (APPROX)

TOTAL SHIPPING 2,200 lbs.

NOTE:

ALL DASHED PIPE, VALVES,
 AND FITTINGS NOT PROVIDED
 BY NELSEN CORPORATION.

SPACE REQUIRED (APPROX)

86"L x 40"W x 86"H

PEAK FLOWS ARE NOT
 RECOMMENDED FOR EXTENDED
 PERIODS OF TIME.

DO NOT SCALE DWG.

THIS DRAWING IS ISSUED IN CONFIDENCE AND
 CANNOT BE REPRODUCED OR USED TO
 MANUFACTURE ANYTHING SHOWN OR REFERRED
 TO WITHOUT DIRECT WRITTEN PERMISSION FROM
 NELSEN CORPORATION.

NELSEN
 CORPORATION

NELSEN CORPORATION
 5151 PORTSIDE DR - MEDINA, OH 44256
 800-362-9686
 OHIO • ARIZONA • TEXAS • FLORIDA

GENERAL ARRANGEMENT DWG.
 SOFTENER 300K COMPOSITE TANK
 DUPLEX NXT2 SYSTEM

DRAWN BY:	RAR
DATE:	01-09-17
CHECKED BY:	
PAGE 1 OF 1	REV:

DWG. NO.
 NCSMF-29/17NXT2-DUP-300-C3048