

DUPLEX NXT2 SOFTENER

MODEL NO. NCSMF-29/17NXT2-DUP-600-C5060

CAPACITY:

MIN. 480,000 grs. @ 10 lbs./cu.ft. (each tank)
 MAX. 600,000 grs. @ 15 lbs./cu.ft. (each tank)

FLOW RATE:

NORMAL 100 gpm.
 PEAK 140 gpm.
 BACKWASH 35 gpm.

TANK SIZE: 36" x 72"

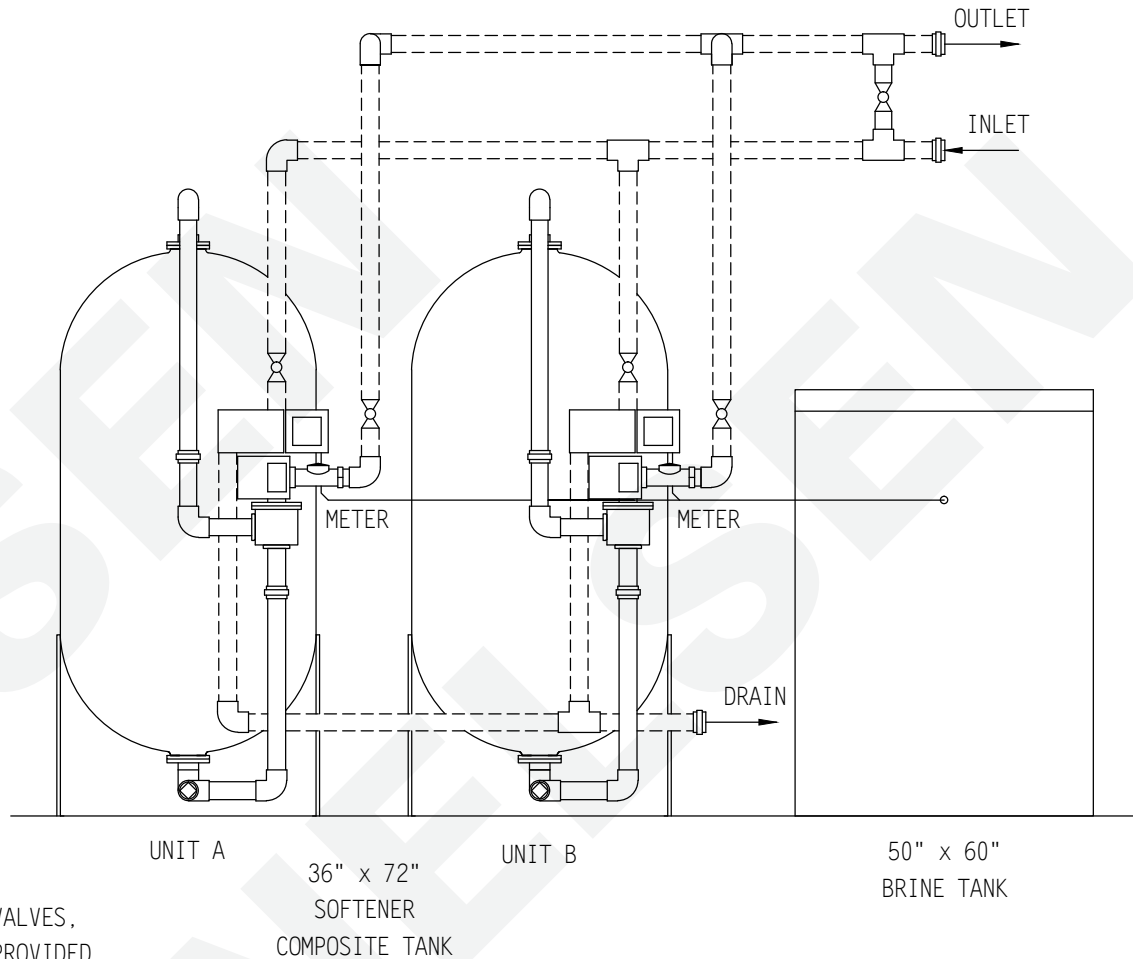
100 PSI COMPOSITE

MEDIA:

RESIN 20 cu.ft. (each tank)
 GRAVEL 500 lbs. (each tank)

PIPE SIZE: PVC

INLET 2"
 OUTLET 2"
 DRAIN 1"
 BRINE 1/2"
 METER 3"



BRINE TANK

MODEL NO. BT5060R-454HF-5

TANK SIZE: 50" x 60"

POLYETHYLENE

CAPACITY:

500 gals.
 4,500 lbs./salt

BRINE VALVE: 454HF

BRINE WELL: 5"

WEIGHT (APPROX)

TOTAL SHIPPING 4,140 lbs.

NOTE:

ALL DASHED PIPE, VALVES,
 AND FITTINGS NOT PROVIDED
 BY NELSEN CORPORATION.

SPACE REQUIRED (APPROX)

134"L x 50"W x 95"H

PEAK FLOWS ARE NOT
 RECOMMENDED FOR EXTENDED
 PERIODS OF TIME.

DO NOT SCALE DWG.

THIS DRAWING IS ISSUED IN CONFIDENCE AND
 CANNOT BE REPRODUCED OR USED TO
 MANUFACTURE ANYTHING SHOWN OR REFERRED
 TO WITHOUT DIRECT WRITTEN PERMISSION FROM
 NELSEN CORPORATION.

		NELSEN CORPORATION 5151 PORTSIDE DR - MEDINA, OH 44256 800-362-9686 OHIO • ARIZONA • TEXAS • FLORIDA	
		GENERAL ARRANGEMENT DWG. SOFTENER 600K COMPOSITE TANK DUPLEX NXT2 SYSTEM	
DRAWN BY: RAR	DATE: 01-09-17	DWG. NO. NCSMF-29/17NXT2-DUP-600-C5060	
CHECKED BY:	REV:		
PAGE 1 OF 1			