

QUADPLEX SOFTENER

MODEL NO. NCSMF-39/18NXT2-QUAD-1200-C5060

CAPACITY: (each tank)

MIN. 960,000 grs. @ 10 lbs./cu.ft.

MAX. 1,200,000 grs. @ 15 lbs./cu.ft.

FLOW RATE: (each tank)

NORMAL 205 gpm.

PEAK 280 gpm.

BACKWASH 60 gpm.

TANK SIZE: 48" x 72"

COMPOSITE

MEDIA: (each tank)

RESIN 40 cu.ft.

GRAVEL 900 lbs.

PIPE SIZE" PVC

MATERIAL

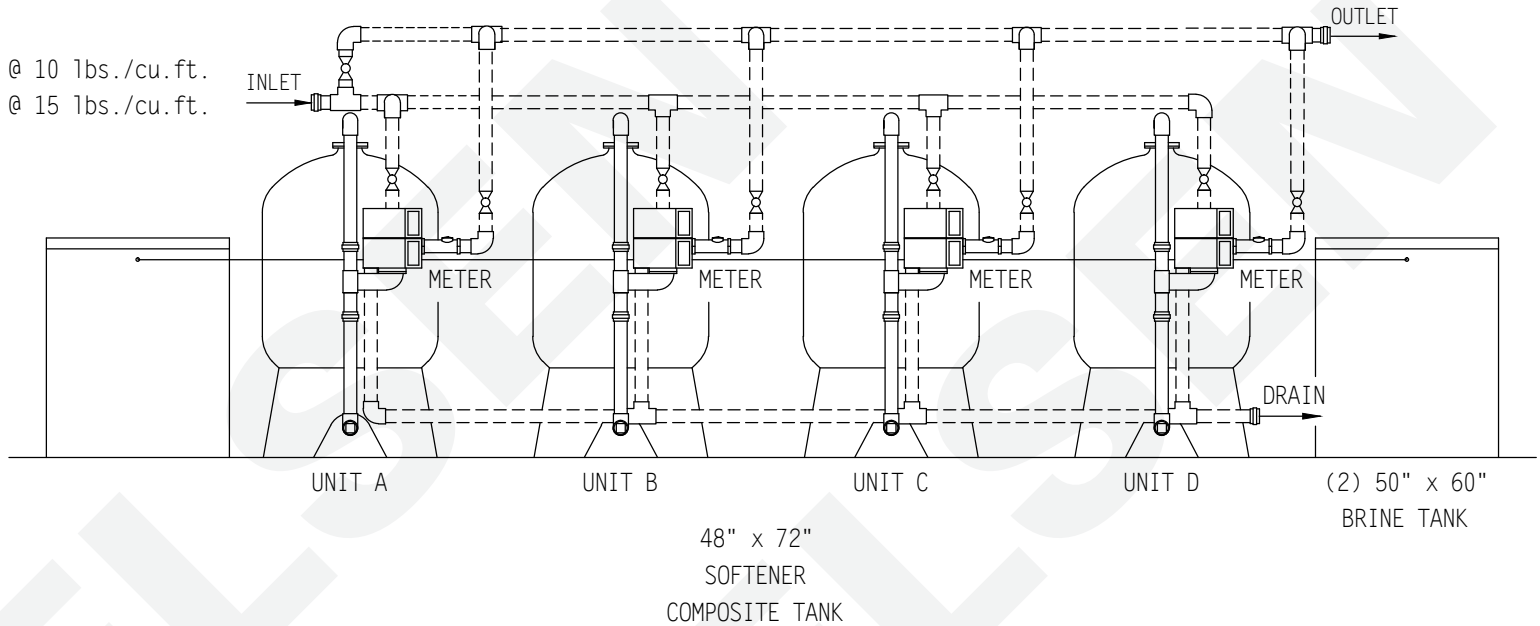
INLET 3"

OUTLET 3"

DRAIN 2"

BRINE 1"

METER 3"



BRINE TANK

MODEL NO. BT5060R-494-5

TANK SIZE: 50" x 60"

POLYETHYLENE

CAPACITY: (each tank)

500 gals.

4,500 lbs./salt

BRINE VALVE: 494

BRINE WELL: 5"

WEIGHT (APPROX)

TOTAL SHIPPING 14,550 lbs.

NOTE:

ALL DASHED PIPE, VALVES,
AND FITTINGS NOT PROVIDED
BY NELSEN CORPORATION.

SPACE REQUIRED (APPROX)

308"L x 63"W x 106"H

PEAK FLOWS ARE NOT

RECOMMENDED FOR EXTENDED

PERIODS OF TIME.

DO NOT SCALE DWG.

THIS DRAWING IS ISSUED IN CONFIDENCE AND
CANNOT BE REPRODUCED OR USED TO
MANUFACTURE ANYTHING SHOWN OR REFERRED
TO WITHOUT DIRECT WRITTEN PERMISSION FROM
NELSEN CORPORATION.

NELSEN
CORPORATION

NELSEN CORPORATION
OHIO • ARIZONA • TEXAS • FLORIDA
5151 PORTSIDE DRIVE - MEDINA, OH 44256
800-362-9686
NELSENCORP.COM/COMMERCIAL

GENERAL ARRANGEMENT DWG.
SOFTENER 1200K COMPOSITE TANK
QUADPLEX PROGRESSIVE SYSTEM

DRAWN BY:	RAR
DATE:	02-01-17
CHECKED BY:	
PAGE 1 OF 1	REV:

DWG. NO.
NCSMF-39/18NXT2-QUAD-1200-C5060