

# TWIN ALTERNATING SOFTENER

MODEL NO. NCSMF-39/18NXT2-TA-300-C3048

CAPACITY: (each tank)

MIN. 240,000 grs. @ 10 lbs./cu.ft.

MAX. 300,000 grs. @ 15 lbs./cu.ft.

FLOW RATE: (each tank)

NORMAL 120 gpm.

PEAK 170 gpm.

BACKWASH 15 gpm.

TANK SIZE: 24" x 72"

COMPOSITE

MEDIA: (each tank)

RESIN 10 cu.ft.

GRAVEL 250 lbs.

PIPE SIZE"

MATERIAL PVC

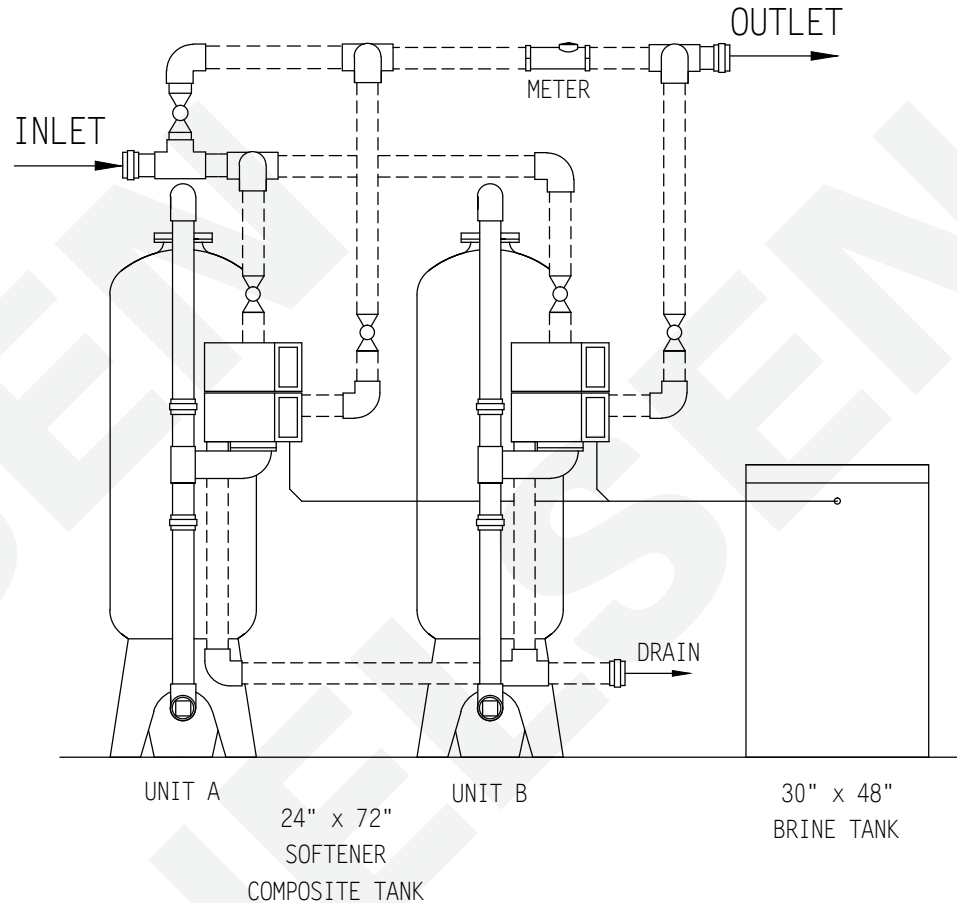
INLET 3"

OUTLET 3"

DRAIN 2"

BRINE 1"

METER 3"



NOTE:

ALL DASHED PIPE, VALVES, AND FITTINGS NOT PROVIDED BY NELSEN CORPORATION.

SPACE REQUIRED (APPROX)

120"L x 39"W x 92"H

PEAK FLOWS ARE NOT

RECOMMENDED FOR EXTENDED

PERIODS OF TIME.

## BRINE TANK

MODEL NO. BT3048R-494-5

TANK SIZE: 30" x 48"

POLYETHYLENE

CAPACITY:

145 gals.

1,200 lbs./salt

BRINE VALVE: 494

BRINE WELL: 5"

WEIGHT (APPROX)

TOTAL SHIPPING 2,550 lbs.

DO NOT SCALE DWG.

THIS DRAWING IS ISSUED IN CONFIDENCE AND CANNOT BE REPRODUCED OR USED TO MANUFACTURE ANYTHING SHOWN OR REFERRED TO WITHOUT DIRECT WRITTEN PERMISSION FROM NELSEN CORPORATION.

**NELSEN**  
CORPORATION

**NELSEN CORPORATION**  
OHIO • ARIZONA • TEXAS • FLORIDA  
5151 PORTSIDE DRIVE - MEDINA, OH 44256  
800-362-9686  
NELSENCORP.COM/COMMERCIAL

GENERAL ARRANGEMENT DWG.  
SOFTENER 300K COMPOSITE TANK  
SYSTEM 7-ALTERNATING

DRAWN BY:	RAR
DATE:	01-30-17
CHECKED BY:	
PAGE 1 OF 1	REV:

DWG. NO.  
NCSMF-39/18NXT2-TA-300-C3048