

TWIN ALTERNATING SOFTENER

MODEL NO. NCSMF-39/18NXT2-TA-450-C3948

CAPACITY: (each tank)

MIN. 360,000 grs. @ 10 lbs./cu.ft.

MAX. 450,000 grs. @ 15 lbs./cu.ft.

FLOW RATE: (each tank)

NORMAL 155 gpm.

PEAK 210 gpm.

BACKWASH 25 gpm.

TANK SIZE: 30" x 72"

COMPOSITE

MEDIA: (each tank)

RESIN 15 cu.ft.

GRAVEL 350 lbs.

PIPE SIZE"

MATERIAL PVC

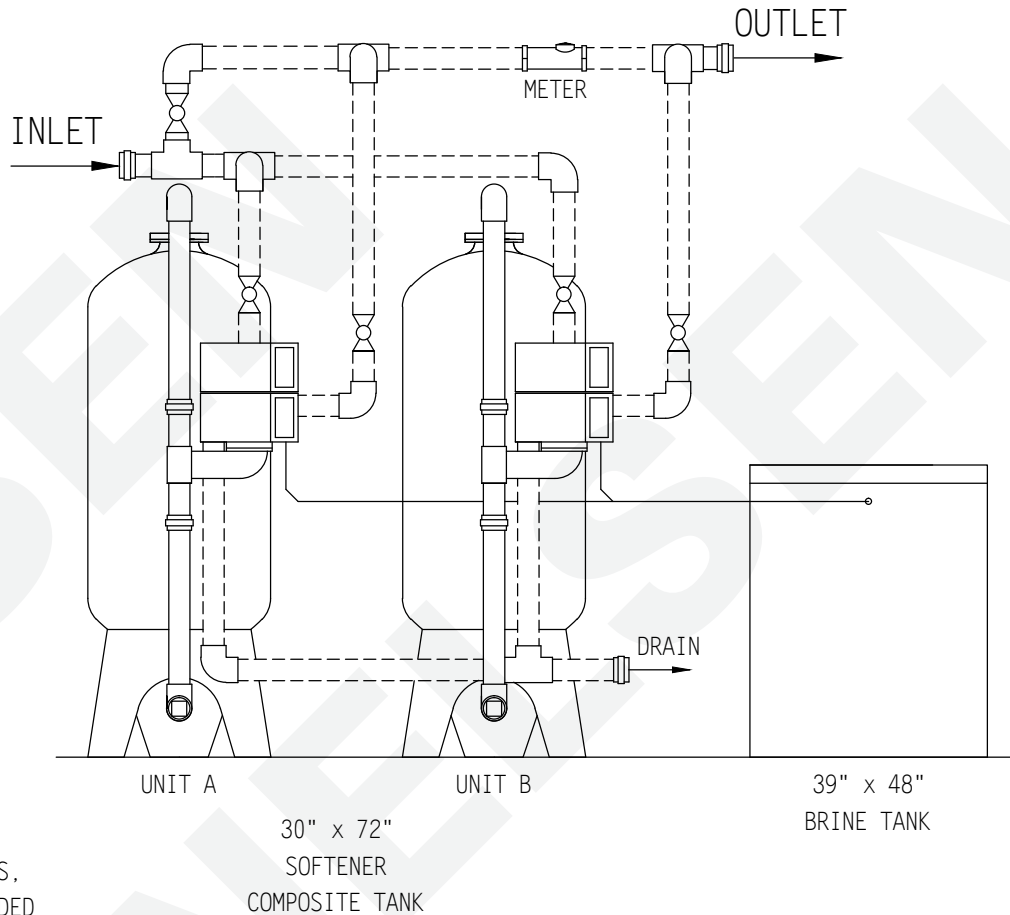
INLET 3"

OUTLET 3"

DRAIN 2"

BRINE 1"

METER 3"



NOTE:

ALL DASHED PIPE, VALVES,
AND FITTINGS NOT PROVIDED
BY NELSEN CORPORATION.

BRINE TANK

MODEL NO. BT3948R-494-5

TANK SIZE: 39" x 48"

POLYETHYLENE

CAPACITY:

250 gals.

2,200 lbs./salt

BRINE VALVE: 494

BRINE WELL: 5"

WEIGHT (APPROX)

TOTAL SHIPPING 3,450 lbs.

SPACE REQUIRED (APPROX)

150"L x 45"W x 96"H

PEAK FLOWS ARE NOT

RECOMMENDED FOR EXTENDED

PERIODS OF TIME.

DO NOT SCALE DWG.

THIS DRAWING IS ISSUED IN CONFIDENCE AND
CANNOT BE REPRODUCED OR USED TO
MANUFACTURE ANYTHING SHOWN OR REFERRED
TO WITHOUT DIRECT WRITTEN PERMISSION FROM
NELSEN CORPORATION.

NELSEN
CORPORATION

NELSEN CORPORATION
OHIO • ARIZONA • TEXAS • FLORIDA
5151 PORTSIDE DRIVE - MEDINA, OH 44256
800-362-9686
NELSENCORP.COM/COMMERCIAL

GENERAL ARRANGEMENT DWG.
SOFTENER 450K COMPOSITE TANK
SYSTEM 7-ALTERNATING

| | |
|-------------|----------|
| DRAWN BY: | RAR |
| DATE: | 01-30-17 |
| CHECKED BY: | |
| PAGE 1 OF 1 | REV: |

DWG. NO.
NCSMF-39/18NXT2-TA-450-C3948