

TRIPLEX METER SOFTENER

MODEL NO. NCSMF-WS2H-TRI-300-C3048

CAPACITY: (each tank)

MIN. 240,000 grs. @ 10 lbs./cu.ft.

MAX. 300,000 grs. @ 15 lbs./cu.ft.

FLOW RATE: (each tank)

NORMAL 73 gpm.

PEAK 94 gpm.

BACKWASH 15 gpm.

TANK SIZE: 24" x 72"

COMPOSITE

MEDIA: (each tank)

RESIN 10 cu.ft.

GRAVEL 250 lbs.

PIPE SIZE:

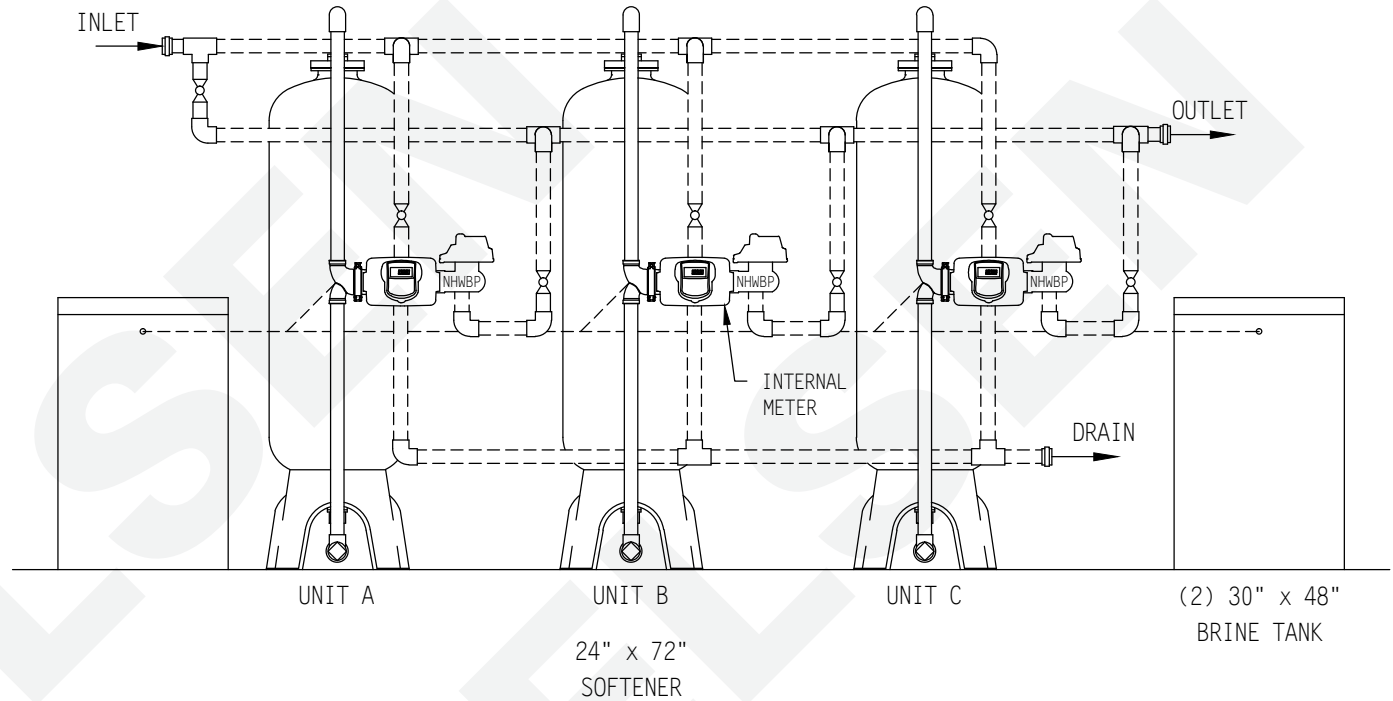
INLET 2"

OUTLET 2"

DRAIN 1"

BRINE 1/2"

METER 2"



BRINE TANK

MODEL NO. BT3048R-454HF-5

TANK SIZE: 30" x 48"

POLYETHYLENE

CAPACITY: (each tank)

145 gal.s.

1,200 lbs./salt

BRINE VALVE: 454HF

BRINE WELL: 5"

WEIGHT (APPROX)

TOTAL SHIPPING 2,995 lbs.

NOTE:

ALL DASHED PIPE, VALVES,
AND FITTINGS NOT PROVIDED
BY NELSEN CORPORATION.

SPACE REQUIRED (APPROX)

148"L x 30"W x 89"H

PEAK FLOWS ARE NOT

RECOMMENDED FOR EXTENDED
PERIODS OF TIME.

DO NOT SCALE DRAWING

THIS DRAWING IS ISSUED IN CONFIDENCE AND
CANNOT BE REPRODUCED OR USED TO
MANUFACTURE ANYTHING SHOWN OR REFERRED
TO WITHOUT DIRECT WRITTEN PERMISSION FROM
NELSEN CORPORATION.

NELSEN
CORPORATION

NELSEN CORPORATION
OHIO • ARIZONA • TEXAS • FLORIDA
3250 BARBER RD - NORTON, OH 44203
800-362-9686
NELSENCORP.COM/COMMERCIAL

GENERAL ARRANGEMENT DWG.
SOFTENER 300K COMPOSITE TANK
TRIPLEX METER SYSTEM

DRAWN BY:	RAR
DATE:	04-06-17
CHECKED BY:	
PAGE 1 OF 1	REV:

DWG. NO.

NCSMF-WS2H-TRI-300-C3048