

# TRIPLEX METER SOFTENER

MODEL NO. NCSMF-WS2H-TRI-450-C3948

**CAPACITY:** (each tank)

MIN. 360,000 grs. @ 10 lbs./cu.ft.  
 MAX. 450,000 grs. @ 15 lbs./cu.ft.

**FLOW RATE:** (each tank)

NORMAL 88 gpm.  
 PEAK 113 gpm.  
 BACKWASH 25 gpm.

**TANK SIZE:** 30" x 72"

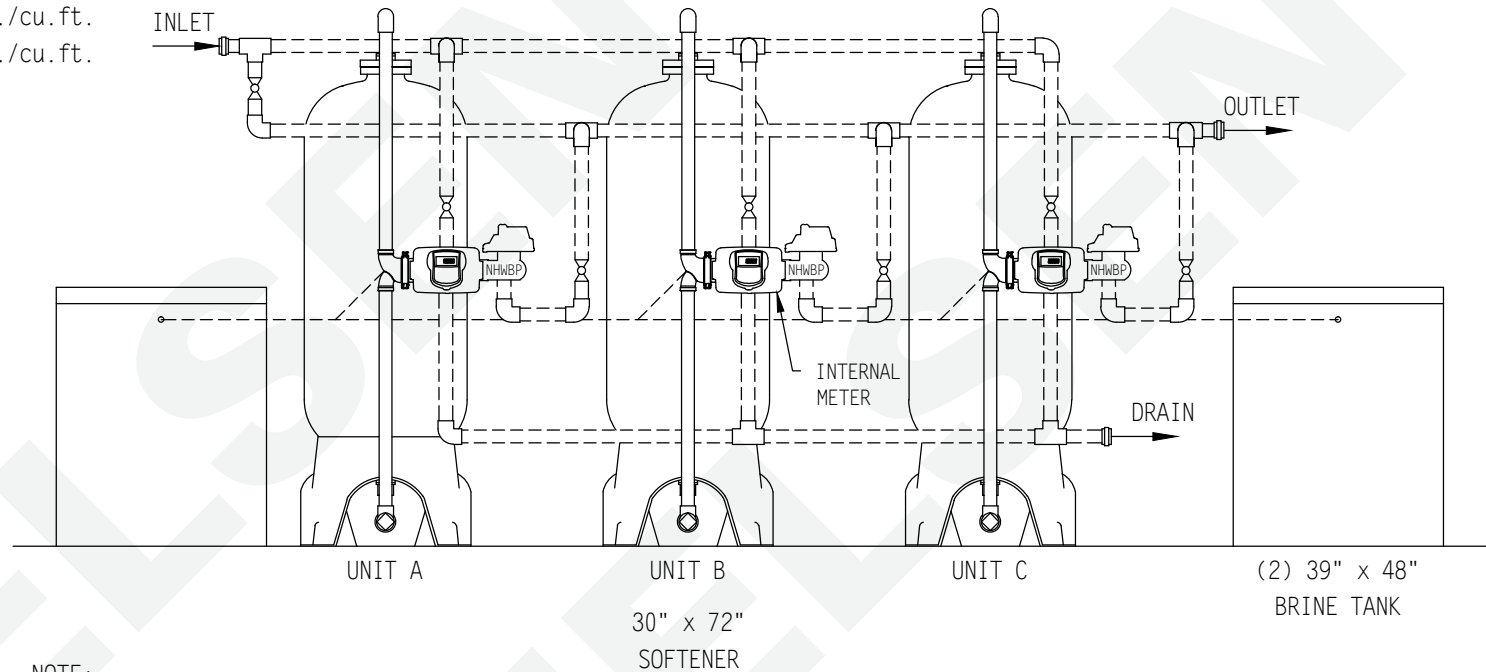
**COMPOSITE**

**MEDIA:** (each tank)

RESIN 15 cu.ft.  
 GRAVEL 350 lbs.

**PIPE SIZE:**

INLET 2"  
 OUTLET 2"  
 DRAIN 1"  
 BRINE 1/2"  
 METER 2"



**BRINE TANK**

MODEL NO. BT3948R-454HF-5

**TANK SIZE:** 39" x 48"

POLYETHYLENE

**CAPACITY:** (each tank)

250 gal.  
 2,200 lbs./salt

BRINE VALVE: 454HF

BRINE WELL: 5"

**WEIGHT (APPROX)**

TOTAL SHIPPING 4,685 lbs.

**NOTE:**

ALL DASHED PIPE, VALVES,  
 AND FITTINGS NOT PROVIDED  
 BY NELSEN CORPORATION.

**SPACE REQUIRED (APPROX)**

184"L x 39"W x 96"H

PEAK FLOWS ARE NOT  
 RECOMMENDED FOR EXTENDED  
 PERIODS OF TIME.

**DO NOT SCALE DRAWING**

THIS DRAWING IS ISSUED IN CONFIDENCE AND  
 CANNOT BE REPRODUCED OR USED TO  
 MANUFACTURE ANYTHING SHOWN OR REFERRED  
 TO WITHOUT DIRECT WRITTEN PERMISSION FROM  
 NELSEN CORPORATION.

**NELSEN**  
 CORPORATION

**NELSEN CORPORATION**  
 OHIO • ARIZONA • TEXAS • FLORIDA  
 3250 BARBER RD - NORTON, OH 44203  
 800-362-9686  
 NELSENCORP.COM/COMMERCIAL

GENERAL ARRANGEMENT DWG.  
 SOFTENER 450K COMPOSITE TANK  
 TRIPLEX METER SYSTEM

DRAWN BY:	RAR
DATE:	04-06-17
CHECKED BY:	
PAGE 1 OF 1	REV:

DWG. NO.  
**NCSMF-WS2H-TRI-450-C3948**